

WorkshopPLUS - SQL Server: AlwaysOn Availability Groups and Failover Cluster Instances - Monitoring and Troubleshooting

WorkshopPLUS

Duration: 3 Days | **Focus Area:** Availability and Business Continuity | **Difficulty:** Level 300

This course will provide you the knowledge of troubleshooting problems and exploring the tools available to monitor, troubleshoot and identify the cause of common SQL Server AlwaysOn Availability Groups (AG) and Failover Cluster Instances (FCI) issues. Most of the content can be applied across all supported versions of SQL Server AlwaysOn AG and FCI.

This workshop is targeted at SQL Server Architects, Database Administrators, IT professionals, and SQL Server support staff who wish to formulate a practiced approach to SQL Server AlwaysOn Availability Groups and Failover Clustering monitoring and troubleshooting.

♦ OUTCOMES ♦

01 SKILLS

Gain a deeper understanding of troubleshooting different scenarios

02 BEST PRACTICES

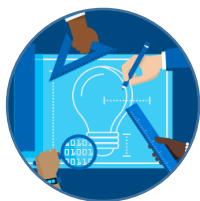
Experience on what to monitor and how to collect and analyze data in order to form an educated hypothesis about the issues

03 WAY FORWARD

Recommendations and guidance on how to apply the knowledge acquired to resolve real problems at the workplace

♦ CAPABILITIES ♦

Hands-on, interactive learning with expert instructors in a classroom environment.



OUR EXPERTISE

Learn from industry experts that help enterprise customers solve their most challenging problems.



HANDS ON

Practice the concepts you learned in the classroom by engaging in hours of hands-on lab exercises.

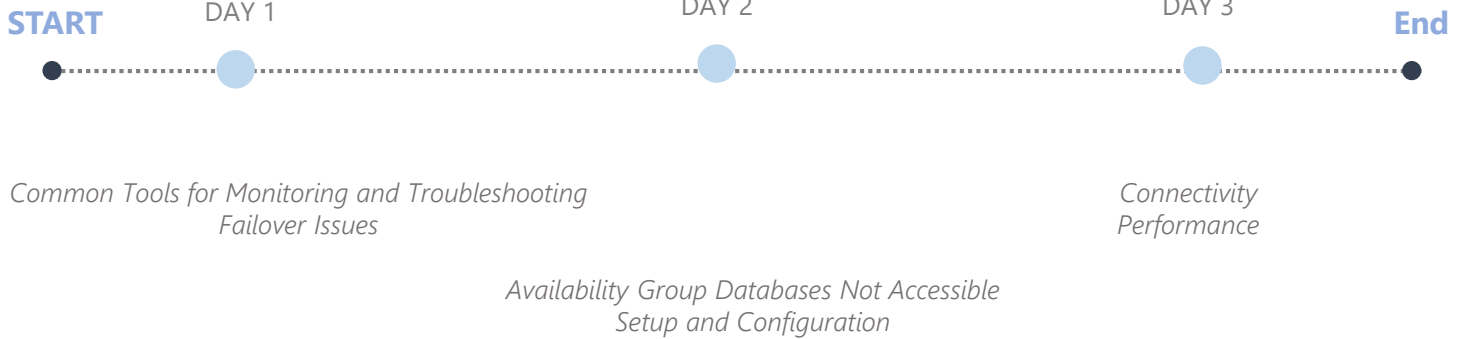


IN-DEPTH LEARNING

Deep technical training that equips you to overcome challenging problems in the real world.

AGENDA

Duration: 3 days



STATS

1000+
COURSES
COMPLETED

95%
CUSTOMER
SATISFACTION



AVAILABLE
WORLDWIDE

ADDITIONAL DETAILS

Objectives

After attending this Workshop, students will be able to:

- See common tools available for monitoring and troubleshooting
- Understand why availability group, cluster group fails over and why failover takes long time
- Understand availability Group Databases status like Recovery Pending and Not Synchronizing
- Learn how to troubleshoot the problems

Prerequisites

Before attending this workshop, it is highly recommended that you meet the following criteria:

- Experience on working with SQL Server AlwaysOn Availability Groups and Failover Cluster Instances.
- Basic understanding and hands-on experience with Windows Server Failover Cluster.
- Attendees who are new to AlwaysOn, it is highly recommended to attend WorkshopPLUS- SQL Server: AlwaysOn Availability Groups and Failover Cluster Instances - Setup and Configuration..

NEXT STEPS: If you are interested in an AlwaysOn monitoring and troubleshooting, contact your Microsoft Account Representative.