

Microsoft Identity Manager: Introduction & Technical Overview

WorkshopPLUS

Duration: 3 Days | **Focus Area:** Operations and Monitoring **Level:** 200

Microsoft Identity Manager (MIM) 2016 builds upon the identity management and user self service capabilities introduced in Forefront Identity Manager (FIM) 2010/R2 while supporting the latest Microsoft software releases. This three-day Workshop introduces and explains the features and capabilities of MIM 2016. It also provides an overview of the solution scenarios that MIM addresses including user, group and password management.

This WorkshopPLUS is targeted at systems engineers, developers, architects, and project leaders. It is also suitable for those who want to review the MIM technology, gain a good understanding of its purpose, and get some experience in the functioning of Active Directory, Microsoft Exchange Server and Microsoft SQL Server.

◆ OUTCOMES ◆



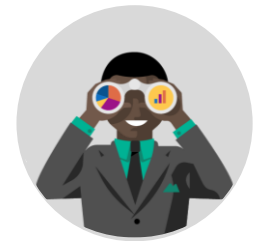
Skills

Gain a comprehensive understanding of the features and capabilities of MIM 2016



Best Practices

Learn about Identity synchronization and user provisioning in MIM 2016



Way Forward

Take what you learned to help you with day to day identity management tasks

◆ PREREQUISITES ◆

Participants who have no or some experience with FIM 2010/R2 or MIM 2016 receive the most value from this course.



Recommended Qualifications

- Systems engineers, developers, architects, and project leaders
- Who need to gain a good understanding of how MIM 2016 can be applied to manage identity information across a number of directories or databases.

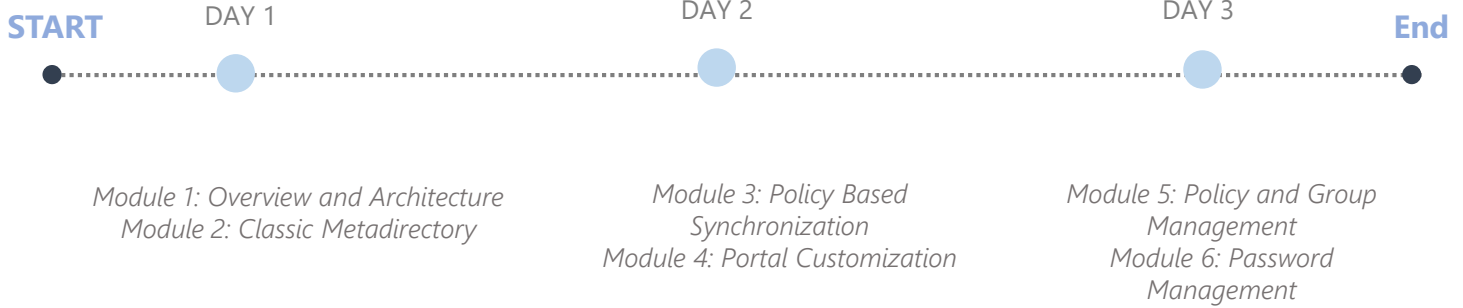


Hardware Requirements

- An Intel Core-i5-based PC
- 4 GB RAM
- 128 GB HDD
- Windows 7 SP1 or later
- Office 2013 Professional Plus
- Internet access with at least 1 Mbps bandwidth per student

AGENDA

Duration: 5 days



SYLLABUS

Module 1: Overview and Architecture

- This module discusses the installation of Microsoft Identity Manager 2016 components as well as the prerequisites and architecture necessary to support the environment.

Module 2: Classic Metadirectory

- In this module, you will be presented with techniques and approach methodologies that are useful in different scenarios on a classic synchronization infrastructure.

Module 3: Policy Based Synchronization

- This module discusses how you will transform legacy synchronization processes to declarative provisioning and deprovisioning.

Module 4: Portal Customization

- This module covers the customization of the service schema as well as portal look and feel and company branding.

Module 5: Policy and Group Management

- This module focuses on the provisioning, deprovisioning and group management scenarios using declarative synchronization rules.

Module 6: Password Management

- This module provides steps to implement self-service password reset and synchronize passwords to connected systems.

NEXT STEPS: If you are interested in the WorkshopPLUS - Microsoft Identity Manager: Introduction & Technical Overview for your organization, contact your Microsoft Account Representative.