

System Center Configuration Manager: Troubleshooting Client Features

WorkshopPLUS



The WorkshopPLUS provides participants with the skills required to analyse common System Center Configuration Manager (SCCM) Client Feature issues, along with hands-on experience in utilizing related tools and resources for resolving the encountered problems.

The session consists of an instructor-led presentation, demonstrations, discussions and hands-on labs. Attendees will gain insight into the techniques and the process of troubleshooting various Configuration Manager Client issues.

◆ OUTCOMES ◆

01 SKILLS

Gain a deeper understanding of Troubleshoot multi-component SCCM Client Features

02 BEST PRACTICES

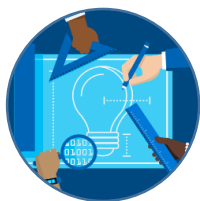
Understand the tools and resources as well as concepts of troubleshooting SCCM Client

03 WAY FORWARD

Provide Microsoft Support with in-depth information as part of reactive cases using the skills learnt

◆ CAPABILITIES ◆

Hands-on, interactive learning with expert instructors in a classroom environment.



OUR EXPERTISE

Learn from industry experts that help enterprise customers solve their most challenging problems.



HANDS ON

Practice the concepts you learned in the classroom by engaging in hours of hands-on lab exercises.



IN-DEPTH LEARNING

Deep technical training that equips you to overcome challenging problems in the real world.

AGENDA

Duration: 3 days

START

DAY 1

DAY 2

DAY 3

End

Module 1: Troubleshooting Tools and Resources

Module 2: Client Installation and Health

Module 3: Inventory, Metering, and Remote Tools

Module 4: Compliance Settings

Module 5: Deploying Packages

Module 6: Deploying Applications

Module 7: Software updates

Module 8: Endpoint Protection

Module 9: Operating System Deployment

STATS

1000+
**COURSES
COMPLETED**

95%
**CUSTOMER
SATISFACTION**



**AVAILABLE
WORLDWIDE**

ADDITIONAL DETAILS

Target Audience and Prerequisites

To ensure the highest quality of knowledge transfer expected by attendees, class size is limited to a maximum of eight participants (total of 16 with two instructors) who meet the following criteria:

- Advanced knowledge and experience with Microsoft System Center Configuration Manager

- Basic knowledge of Windows Server 2016 and a recent client operating system, such as Windows 8.1 or later version of Windows operating system

NEXT STEPS: If you are interested in a [\[\[Change Text\]\]](#) for your organization, contact your Microsoft Account Representative.