

# WorkshopPLUS - Windows PowerShell Azure Resource Manager

## WorkshopPLUS

**Duration:** 3 Days | **Focus Area:** Operations & Monitoring | **Level:** 300

The WorkshopPLUS - Windows PowerShell Azure Resource Manager offer, helps introduce you to the basics of common Microsoft Azure workloads, provides guidance and education for your IT engineers, **using the power of PowerShell**. This is a three-day engagement includes an education sessions to help enhance your

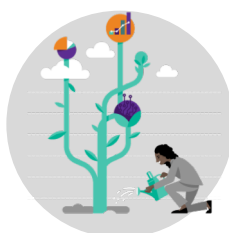
team's technical and operational skills and help drive operational readiness, along with hands-on labs developed by Microsoft engineer, who works with you to create a working Proof of Concept (PoC) in your environment using **AzureRM PowerShell commands**.

### OUTCOMES



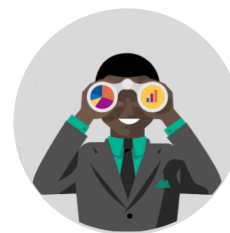
#### Skills

Learn to identify, plan, and build a functioning environment in the cloud using PowerShell leveraging capabilities of Azure.



#### Best Practices

Understand the power of PowerShell scripting for deploying test and development environments on Azure.



#### Way Forward

Build and deploy wherever you want with Azure, the only consistent hybrid cloud on the market.

### PREREQUISITES

Participants that have existing experience with AzureRM PowerShell commands will receive the most value from this course.



#### Recommended Qualifications

- Working knowledge of Azure
- PowerShell CMDlets

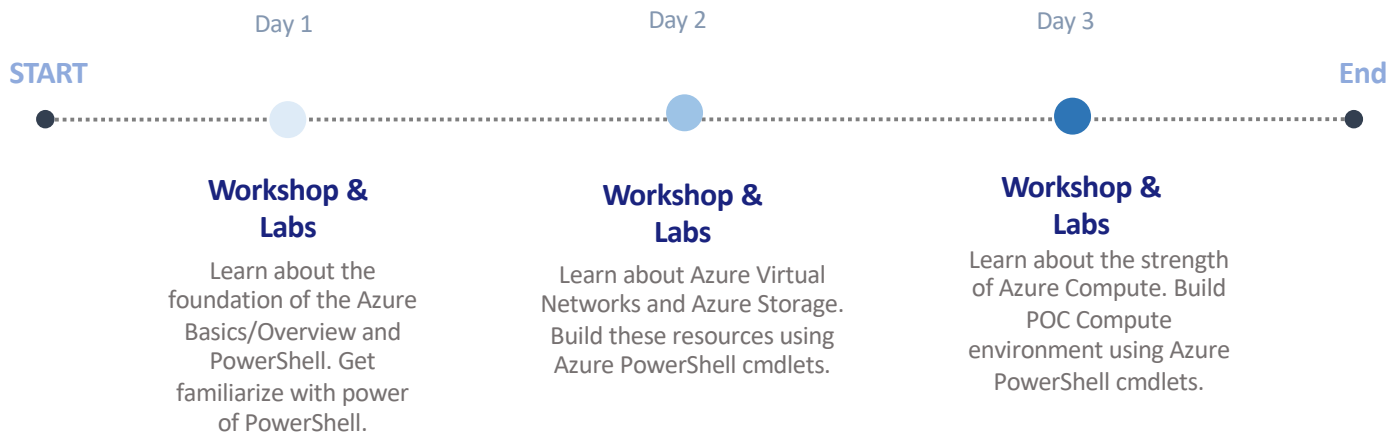


#### Hardware Requirements

- An Intel Core-i5-based PC
- 4 GB RAM
- 128 GB HDD
- Windows 7 SP1 or later
- Office 2013 Professional
- Plus
- Internet access with at least 1 Mbps bandwidth per student
- Ability to execute AzureRM PowerShell CMDlets

## AGENDA

### Duration: 3 days



## SYLLABUS

### Module 1 – Azure IaaS Basics & Overview

- Digital Transformation overview
- Cloud business and economic benefits
- Microsoft Azure overview
- Cloud organizational challenges
- Cloud concepts and principles

### Module 2 – PowerShell basics

- PowerShell Console
- Text Editors
- External Commands
- PowerShell CMDlets
- PowerShell Help
- Variables
- Strings
- PowerShell Objects

### Module 3 – PowerShell Advanced

- Learn about PowerShell Collection
- Arrays
- Hash Tables
- Convert Hash Tables to PSCustomObjects
- Understand Control Flow
- Understand Functions

### Module 4 – Azure Virtual Network

- Networking overview
- Virtual Network
- Hybrid connectivity
- Load balancing portfolio
- Securing services
- Azure DNS
- Azure CDN
- Monitoring and diagnostics

### Module 5 - Azure Storage

- Storage overview
- Storage services
- Storage availability and redundancy
- Storage performance and scalability
- Storage management
- Storage data protection
- Moving data to Storage

### Module 6 - Azure Compute

- Azure compute options
- Azure Virtual Machines
- Azure Reservations
- Azure Virtual Machine Scale Sets
- High availability
- Low-Priority VMs on Virtual Machine Scale Sets
- Deployment approaches and demos
- Deployment models

**NEXT STEPS:** If you are interested in a WorkshopPLUS - Windows PowerShell Azure Resource Manager for your organization, contact your Microsoft Account Representative.