

Office 365 SharePoint Online: PowerApps and Flow for Administrators

WorkshopPLUS

Duration: 3 days | **Focus Area:** Upgrade, Migration and Deployment | **Difficulty:** Advanced

The PowerApps and Flow: Administration for SharePoint workshop is a three-day course that teaches you how to manage and support PowerApps and Microsoft Flow. The key areas of focus include:

- PowerApps overview
- Microsoft Flow overview
- PowerApps and Microsoft Flow administration
- Hybrid configuration with data gateway

This Workshop contains level 200 – 300 content. Review the Target Audience information and contact your Microsoft Services representative to ensure that this Workshop is appropriate to the student's experience and technical expertise.

◆ OUTCOMES ◆

01 SKILLS

Gain a deeper understanding of managing and supporting PowerApps and Microsoft Flow

02 BEST PRACTICES

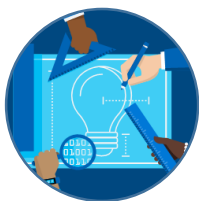
- Configuration and governance
- Permissions and sharing
- Environments administration
- Common Data Service

03 WAY FORWARD

Recommendations and guidance on how to apply the knowledge acquired to resolve real problems at the workplace

◆ CAPABILITIES ◆

Hands-on, interactive learning with expert instructors in a classroom environment.



OUR EXPERTISE

Learn from industry experts that help enterprise customers solve their most challenging problems.



HANDS ON

Practice the concepts you learned in the classroom by engaging in hours of hands-on lab exercises.



IN-DEPTH LEARNING

Deep technical training that equips you to overcome challenging problems in the real world.

AGENDA

This WorkshopPLUS runs for **three** full days. Students should anticipate consistent start and end times for each day. Early departure on any day is not recommended.

Module 1: PowerApps

This module discusses:

- PowerApps and connectors overview
- PowerApps Studio for web / Windows
- PowerApps integration with SharePoint
- Permissions and sharing
- Common Data Services

Module 2: Microsoft Flow

This module discusses:

- Microsoft Flow and connectors overview
- Triggers, actions, and conditional logic
- Microsoft Flow integration with PowerApps
- Microsoft Flow integration with SharePoint
- Team (multi-user) flows

Module 3: Administration

This module discusses:

- Licensing
- Environments
- DLP policies

Module 4: Hybrid with data gateway

This module covers the data gateway and hybrid configurations. This module also introduces connector usage with the gateway, security considerations, and troubleshooting in relation to the data gateway.

STATS

1000+
**COURSES
COMPLETED**

95%
**CUSTOMER
SATISFACTION**



ADDITIONAL DETAILS

Target Audience

This Workshop is intended for SharePoint Server or SharePoint Online administrators who work with PowerApps and Microsoft Flow and require knowledge about administration, governance, and configuration. To ensure the high-quality knowledge transfer expected by students of this three-day Workshop, the class size is limited to a maximum of 16 students who meet the following criteria:

- Currently working as on-premises or online SharePoint administrator
- Microsoft Certified IT Professionals (MCITP) for SharePoint
- Microsoft Certified System Engineers (MCSE), or those with similar experience

Technical Requirements

Participants will need a computer running at least Windows 7, with 50 GB free drive space, a USB port, a 10 Mbps or faster network adapter, at least an evaluation copy of Office 2010 Professional or later, and a PDF reader. Participants also need a Microsoft/Windows Live ID to connect to the virtual environment. The classroom must be networked, with access to the Internet and at least total Internet bandwidth of 2 megabits per second. TCP port 443 must be open. We highly recommend a wired network in the classroom.

NEXT STEPS: If you are interested in this workshop for your organization, contact your Microsoft Account Representative.